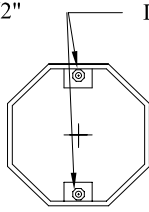


WELD 1/2"x1/2"x1-1/2"
 POLE STOPS
 (TYP. 4 PLCS)
 (SEE NOTE 4)

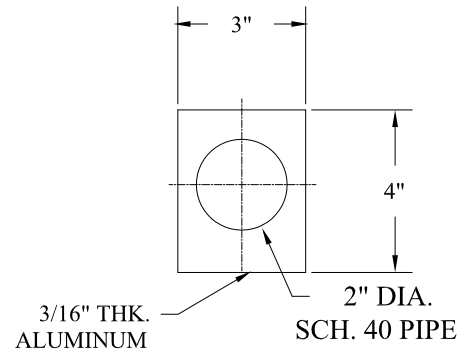
SECTION
"A-A"



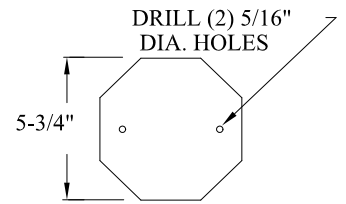
DRILL AND TAP
 1/4"x 20 HOLES
 FLUSH W/TOP

SECTION
"B-B"

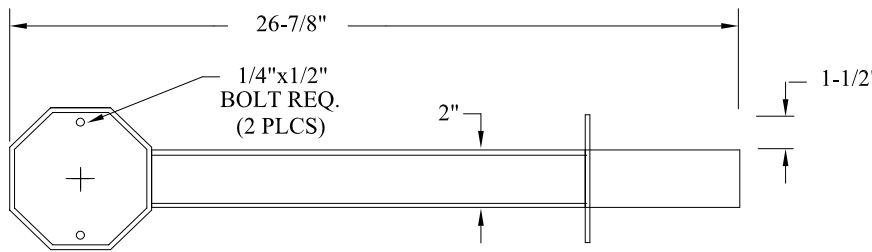
NOTE:
 DRILL IN COVER
 HOLES TO MATCH
 (2PLCS)



FACE MTG
DETAIL

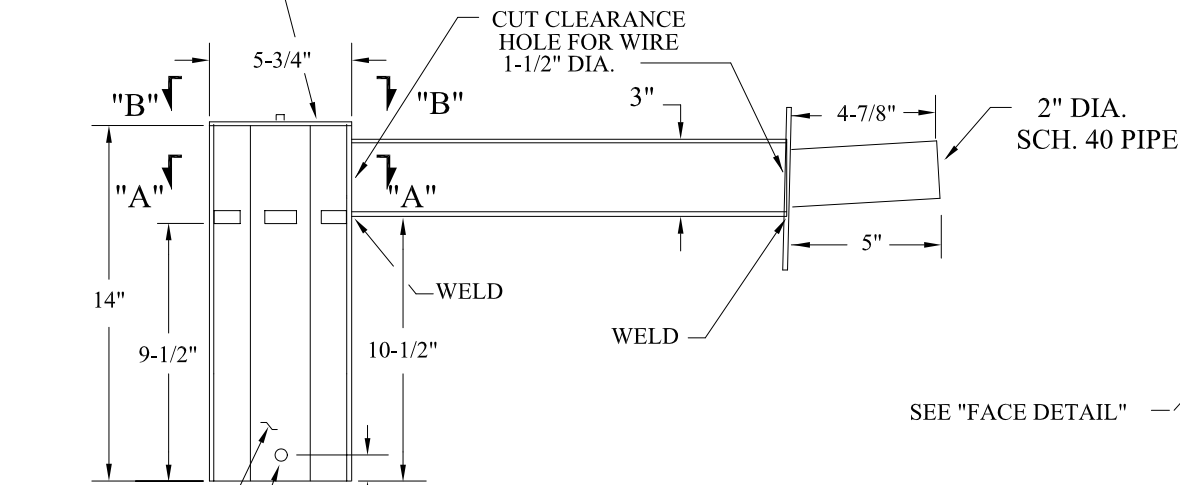


COVER
DETAIL

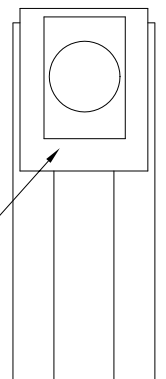


TOP VIEW

REMOVABLE COVER
 OF 3/16" PLATE



SIDE VIEW



END VIEW

SEE "FACE DETAIL"

DRILL & TAP
 FOR A 5/16"
 S.S. SET SCREW
 (TYP. 4 PLCS)

NOTES:

1. BREAK ALL SHARP EDGES.
2. COVER MUST FIT FLUSH WITH TOP.
3. MATERIAL TO BE 1/4" ALUMINUM UNLESS OTHERWISE NOTED.
4. PLATE WELDED ON TOP SIDE ONLY.
 BOTTOM SIDE MUST BE SMOOTH SO CAP WILL SIT LEVEL ON POLE.
5. PAINT ALL EXPOSED SURFACES DARK BRONZE.

DESCRIPTION:

**ALUMINUM SINGLE ARM
 LIGHT BRACKET**

FINISH:

ALUMINUM

QTY: