



LONESTAR PRESTRESS MFG. INC.

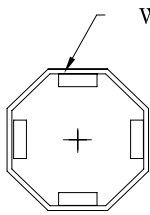
9316 Reid Lake Houston, TX 77064
TEL. (713) 896-0994, FAX (713) 896-0411 www.lonestarprestress.com

DWG.: CATALOG

CAT.: 967894

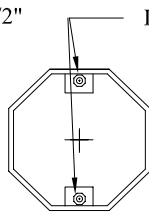
DATE:

PROJECT:



WELD 1/2"x1/2"x1-1/2"
POLE STOPS
(TYP. 4 PLCS)
(SEE NOTE 4)

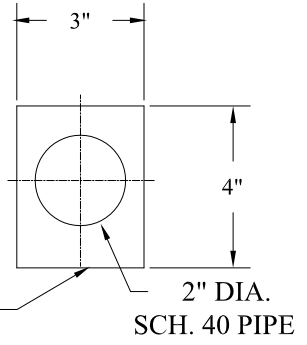
**SECTION
"A-A"**



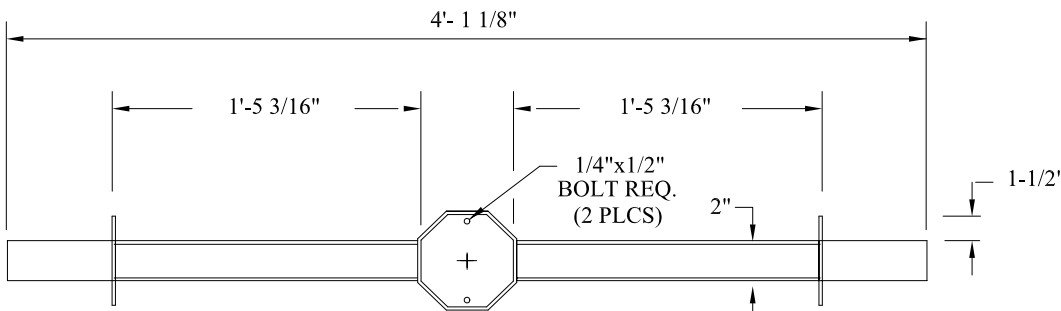
DRILL AND TAP
1/4"x 20 HOLES
FLUSH W/TOP

**SECTION
"B-B"**

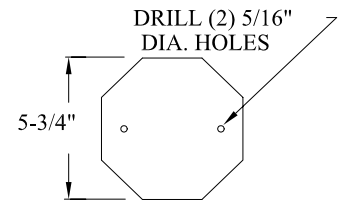
NOTE:
DRILL IN COVER
HOLES TO MATCH
(2PLCS)



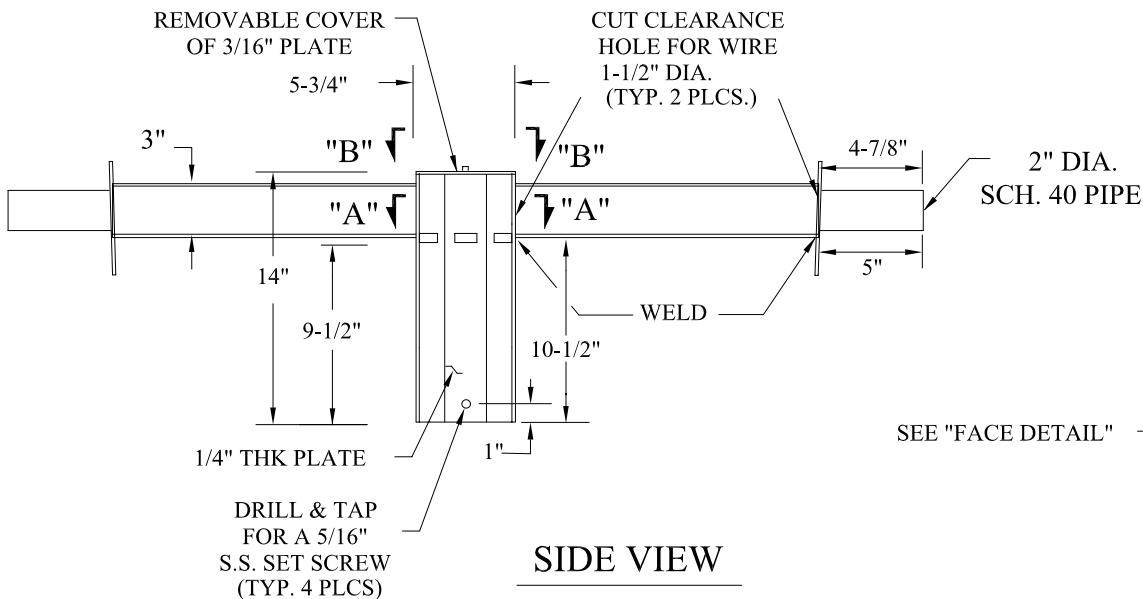
**FACE MTG
DETAIL**



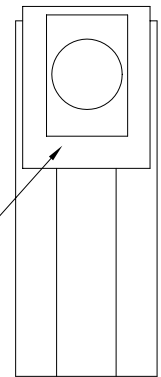
TOP VIEW



**COVER
DETAIL**



SIDE VIEW



END VIEW

NOTES:

1. BREAK ALL SHARP EDGES.
2. COVER MUST FIT FLUSH WITH TOP.
3. MATERIAL TO BE 1/4" ALUMINUM UNLESS OTHERWISE NOTED.
4. PLATE WELDED ON TOP SIDE ONLY.
BOTTOM SIDE MUST BE SMOOTH SO CAP WILL SIT LEVEL ON POLE.
5. PAINT ALL EXPOSED SURFACES DARK BRONZE.

DESCRIPTION:

**ALUMINUM DOUBLE ARM
LIGHT BRACKET**

FINISH:

ALUMINUM

QTY: